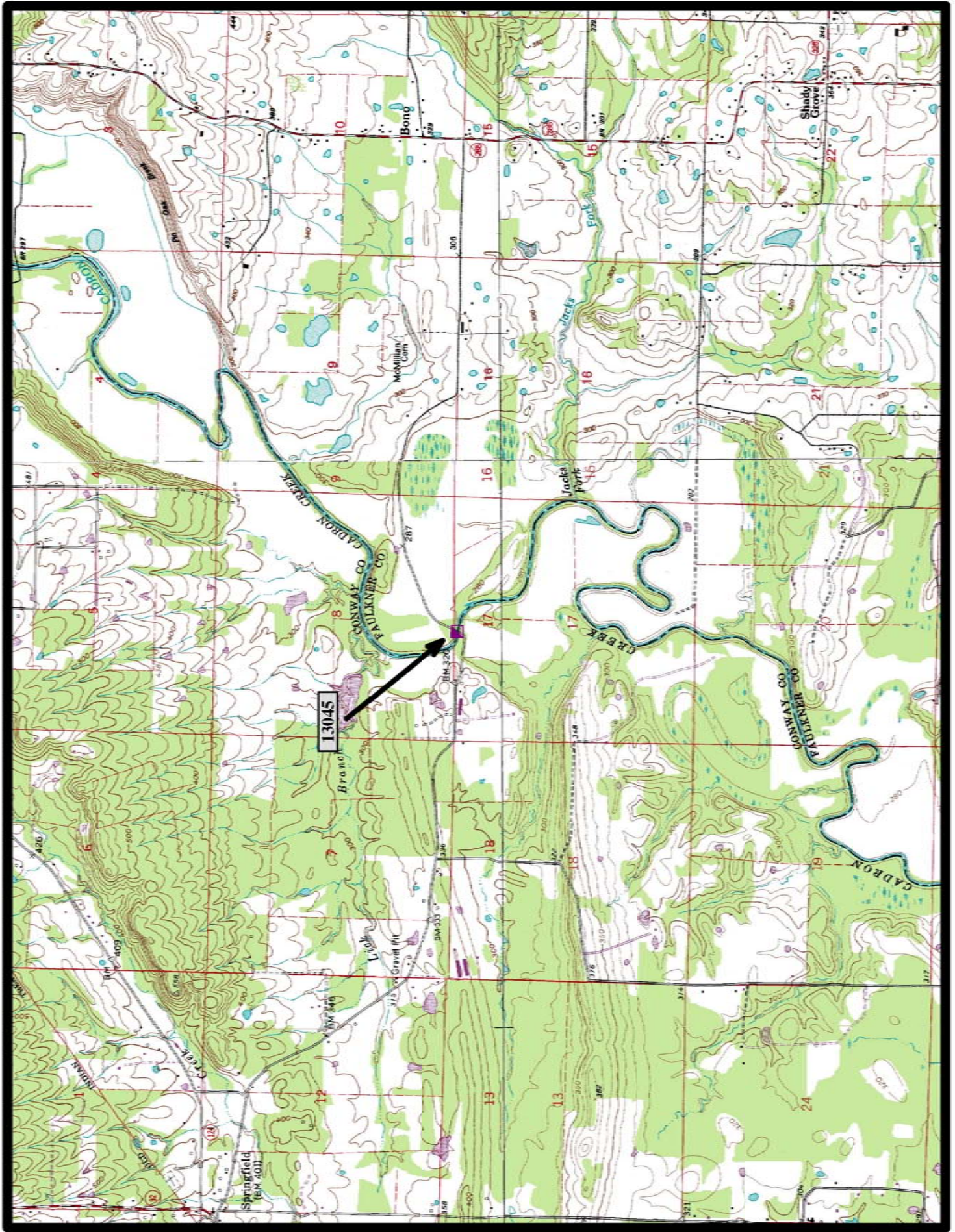


- ▲ In-Service Bowstring Arch Truss (0)
- Demolished NR Bowstring Arch Truss (0)
- ◼ Preserved Bowstring Arch Truss (2)

Bowstring Arch Truss Bridges



PRESERVED HISTORIC BRIDGE #13045
REPLACED SECTION OF COUNTY ROAD 222
FAULKNER COUNTY
BOWSTRING ARCH TRUSS
CROSSES - CADRON CREEK
DATE OF CONSTRUCTION - 1874
BUILDER - KING WROUGHT IRON BRIDGE MANUFACTORY
AND IRON WORKS, IOLA, KS
HISTORIC BRIDGE INVENTORY DATE - 1987
SHPO Number - FA0852
HAER Number - AR-32
DATE LISTED ON NATIONAL REGISTER - 7/21/1988
LAT./LONG. 35:15:09.81, -92:30:45.69

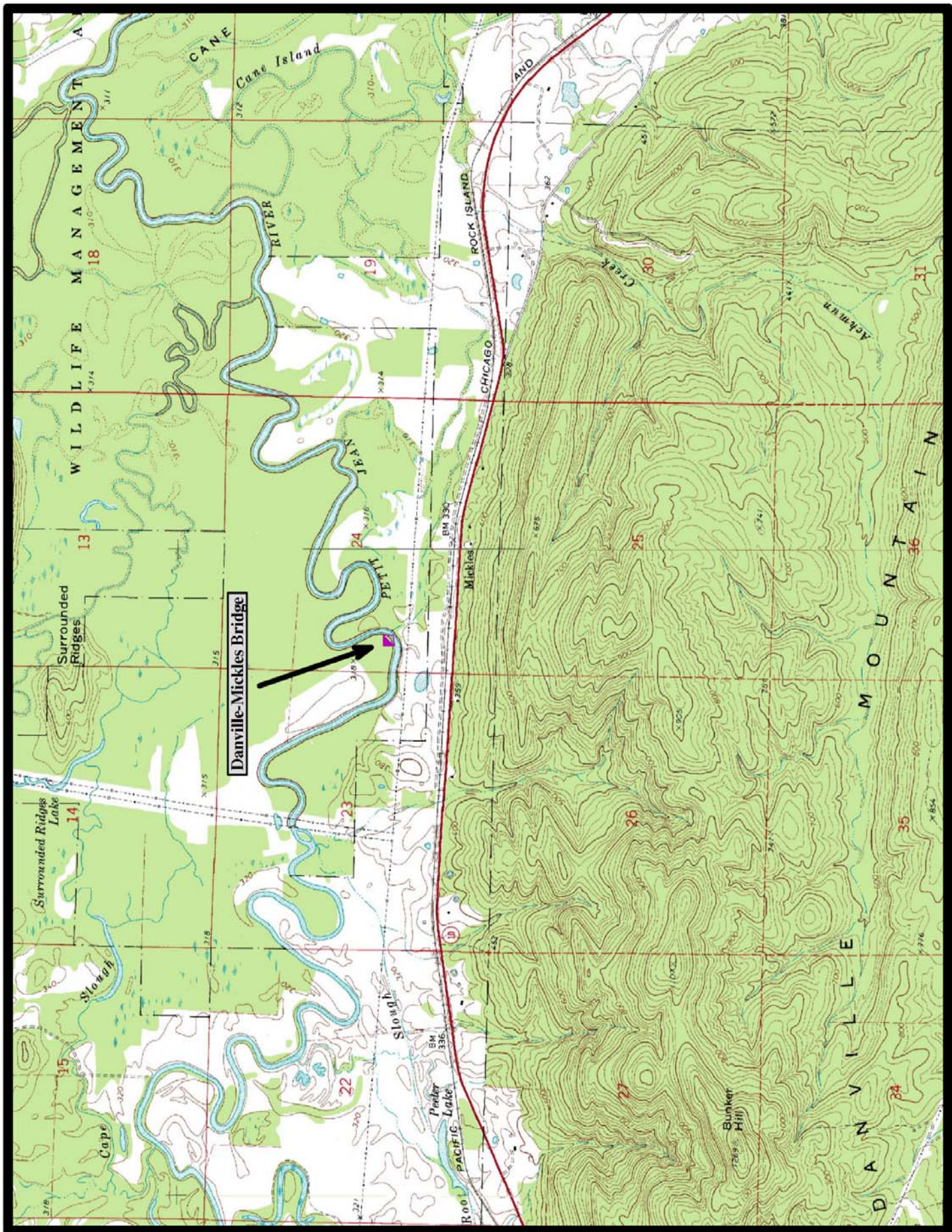


←
North

Springfield 7.5 min. Quad



PRESERVED DANVILLE-MICKLES BRIDGE
OLD DANVILLE ROAD
YELL COUNTY
BOWSTRING ARCH TRUSS
CROSSES - PETIT JEAN RIVER
DATE OF CONSTRUCTION - 1880
BUILDER - KING WROUGHT IRON BRIDGE MANUFACTORY
AND IRON WORKS, IOLA, KS
HISTORIC BRIDGE INVENTORY DATE - 2005
SHPO NUMBER - YE0121
HAER NUMBER - AR-92
DATE LISTED ON NATIONAL REGISTER - 8/16/2007
LAT./LONG. 35:04:19.92, -93:17:51.10



North

Danville Mountain 7.5 min. Quad